

# Port Authority® Ladies Crosshatch Easy Care Shirt L640



With a beautiful two-color weave—not to mention wrinkle resistance—this poplin shirt has a pleasing texture and truly impresses in the office.

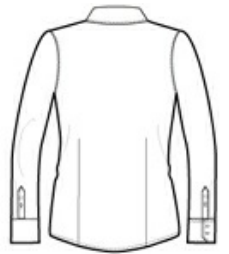
- 3-ounce, 60/40 cotton/poly
- Gently contoured silhouette
- Open collar with Y-shaped slim placket
- Front and back darts
- Pearlized smoke buttons, pearlized white buttons on Chambray Blue, Navy Frost, and Pink Orchid
- Adjustable, button-through sleeve plackets
- Notched cuffs

### CARE INSTRUCTIONS

MACHINE WASH COLD WITH LIKE COLORS, ONLY NON-CHLORINE BLEACH, TUMBLE DRY LOW, WARM IRON IF NEEDED

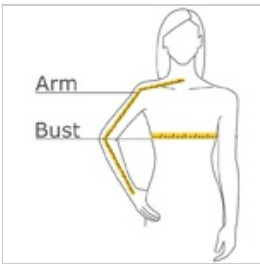


front



back

### HOW TO MEASURE



#### BUST

With arms down at sides, measure around the upper body, under arms and around the fullest part of the bust.

#### ARM

Place hand on hip. Start at the center of the back of the neck and measure across the shoulder, to the elbow, and then down to the wrist.

### SIZE CHART

	XS	S	M	L	XL	XXL	3XL	4XL
Size	2	4/6	8/10	12/14	16/18	20/22	24/26	28/30
Bust	32-34	35-36	37-38	39-41	42-44	45-47	48-51	52-55
Arm	30 - 30 3/4	30 3/4 - 31 1/2	31 1/2 - 32	32 - 32 1/2	32 1/2 - 33	33 - 33 3/8	33 3/8 - 33 3/4	33 3/4 - 34 1/2

### COLOR INFORMATION



Chambray Blue  
PMS NO MATCH



Dark Cactus  
Green  
PMS 7736 C



Deep Blue  
PMS 7545 C



Grape Harvest  
PMS 7666 C



Navy Frost  
PMS NO MATCH



Pink Orchid  
PMS 7431 C



Red Oxide  
PMS 505 C



Soft Black  
PMS 425 C