

**SPORT-TEK®**

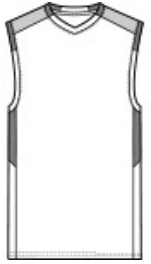
**YST441**



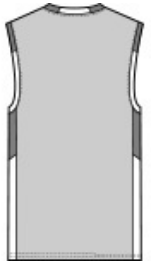
\*\*

**CARE INSTRUCTIONS**

Machine Wash Cold With Like Colors. Do Not Use Fabric Softener. Only Non-Chlorine Bleach, When Needed. Tumble Dry Low. Remove Promptly. Cool Iron, If Necessary.



front



back

**COLOR INFORMATION**

**Please note: PMS code information is shown only when an exact match is available.**

